

Confident Spatial Analysis and Statistics in R & GeoDa

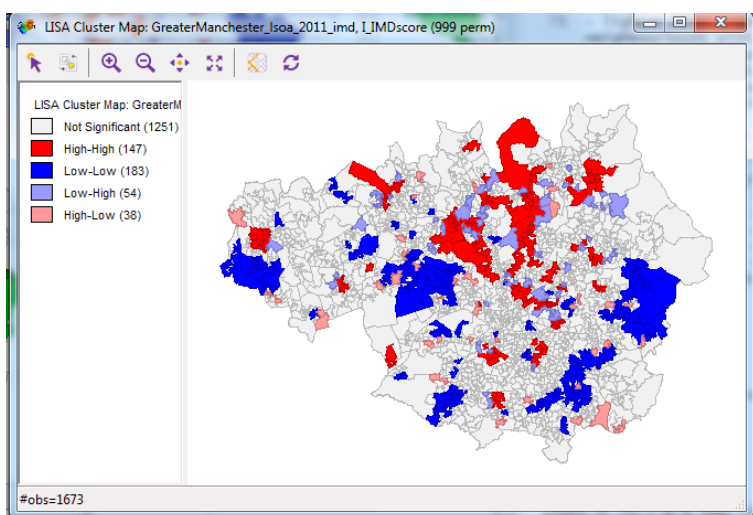
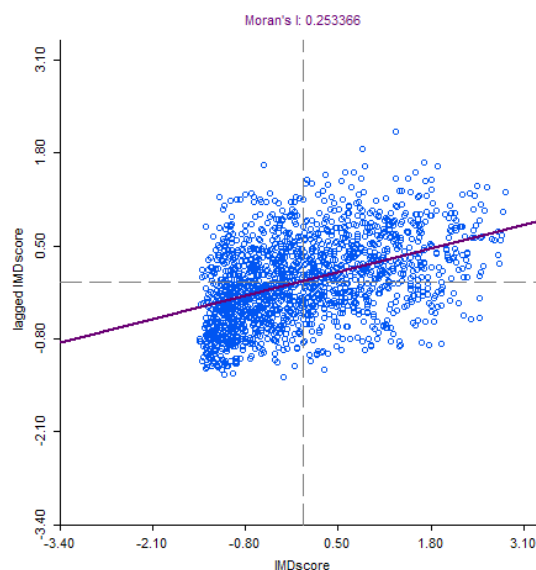
Course Description

In this one day course we will show you how to prepare and conduct spatial analysis on a variety of spatial data in R, including a range of spatial overlays and data processing techniques. We will also cover how to use GeoDa to perform exploratory spatial data analysis, including making use of linked displays and measures of spatial autocorrelation and clustering.

This course can follow-on from the 'Introduction to Spatial Data & Using R as a GIS' course, or be run independently if participants have some previous knowledge of R / RStudio and spatial data.

Learning Outcomes

- Export data from R with projection information
- Understand linked displays in GeoDa
- Perform Local Indicators of Spatial Autocorrelation
- Perform regression in R & GeoDa
- Understand how to read in a variety of formats
- Know how to reorder data
- Understand creating and using functions within R
- Know how to use buffers within R



Outline of the day

- 10am – 10:15am – Registration
- 10:15am – 10:30am – Spatial data and EDA
- 10:30am – 11:00am – RStudio and maps
- 11:00am – 12:30am – Spatial analysis
- 12:30pm – 1:30pm – Lunch
- 1:30pm – 1:45pm – Spatial Decision Making
- 1:45pm – 3:00pm – Buffers & intersections
- 3:00pm – 3:15pm – Tea/coffee
- 3:15pm – 4:30pm – Bring your own data

“A very well run course. Good content, good pace, interesting lectures/examples and an enthusiastic teacher”
- Intro to R Course, Liverpool

“The materials were good. Nick did a good job as trainer. Just enough details in the notes and lots of help if needed.”
- Intermediate R Course, Liverpool



Have a look at www.geospatialtrainingsolutions.co.uk or contact us for more details
Dr Nick Bearman | 01209 808910 | nick@geospatialtrainingsolutions.co.uk